

# Dawn Patrol Over Gilman Springs



## Gilman Springs

## RC Flyers

**WHERE:** Killeen Field, Gilman Springs Rd. Moreno Valley, CA.

**WHEN :** Saturday - April 21, 2012 - 8am to 3pm.

**FEE:** Landing Fee - \$15. **NOTE:** Must show current AMA card.

**ACTIVITIES:** Open Flying (WWI Warbirds Only), Awards, Raffle.

**AWARDS:** 1st, 2nd, 3rd - for over 60 size, 60 & under size, and Electric any size.

Also, Award for "Pilots Choice" and Award for "Peoples Choice".

(Model must be flown to be eligible for an Award).

### FOOD CONCESSION:

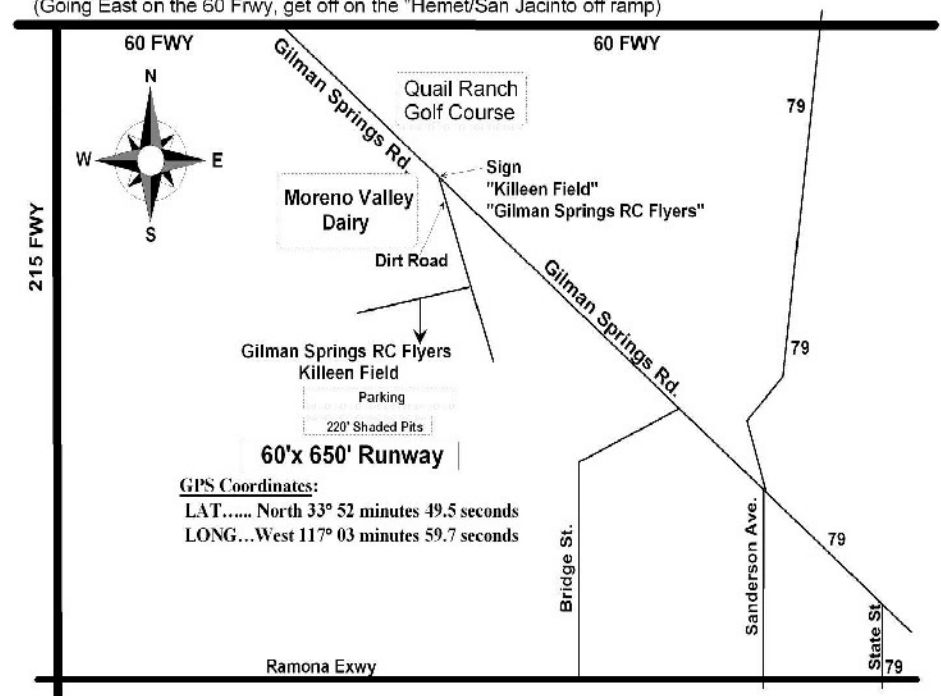


(Going East on the 60 Fwy, get off on the "Hemet/San Jacinto off ramp")

**Dust off your WW I  
model and show it  
off at this Fly-In.**

Enjoy our

- Paved Runway
- Shaded Pits
- Electrical outlets in the pit area for battery charging
- Onsite bathroom.



**\*Open To All\* \*Spectators Welcome\* \*RVs Welcome\***



For information, contact Mike Stone at (951) 845- 7039

